

### 31Z-METER TRUCK-MOUNTED SPECIFICATIONS

|                      |            |            |
|----------------------|------------|------------|
| Length               | 35' 0"     | (10.67m)   |
| Width                | 8' 2"      | (2.50m)    |
| Height               | 12' 11"    | (3.93m)    |
| Wheelbase            | 215"       | (5,461mm)  |
| Front axle weight    | 19,600 lbs | (8,900kg)  |
| Rear axle weight     | 37,800 lbs | (17,100kg) |
| Approx. total weight | 57,400 lbs | (26,000kg) |

Based on Model MACK MRU 613 with .16H pump cell.  
 Weights are approximate and include pump, boom, truck, driver and some fuel.  
 Varies with options selected.  
 Dimensions will vary with different truck makes, models and specifications.

### BOOM SPECIFICATIONS | Z-FOLD DESIGN

#### Height & Reach

|                            |         |          |
|----------------------------|---------|----------|
| Vertical reach             | 100' 1" | (30.51m) |
| Horizontal reach           | 87' 3"  | (26.60m) |
| Reach from front of truck* | 79' 9"  | (24.30m) |
| Reach depth                | 66' 11" | (20.40m) |
| Unfolding height           | 18' 8"  | (5.70m)  |

#### 5-Section Boom

|                          |        |         |
|--------------------------|--------|---------|
| 1st section articulation | 98°    |         |
| 2nd section articulation | 180°   |         |
| 3rd section articulation | 250°   |         |
| 4th section articulation | 246°   |         |
| 5th section articulation | 251°   |         |
| 1st section length       | 24' 7" | (7.50m) |
| 2nd section length       | 16' 9" | (5.10m) |
| 3rd section length       | 16' 5" | (5.00m) |
| 4th section length       | 15' 9" | (4.80m) |
| 5th section length       | 13' 9" | (4.20m) |

#### General Specs

|                                       |        |         |
|---------------------------------------|--------|---------|
| Pipeline size (ID) metric ends        | 5"     | (125mm) |
| Rotation                              | 365°   |         |
| End hose — length                     | 10' 0" | (3.00m) |
| End hose — diameter                   | 5"     | (125mm) |
| Outrigger spread L - R — front        | 20' 8" | (6.30m) |
| hydraulically extend out & down       |        |         |
| Outrigger spread L - R — rear         | 20' 8" | (6.30m) |
| hydraulically swing out & extend down |        |         |

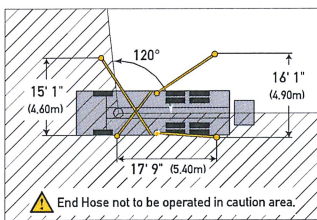
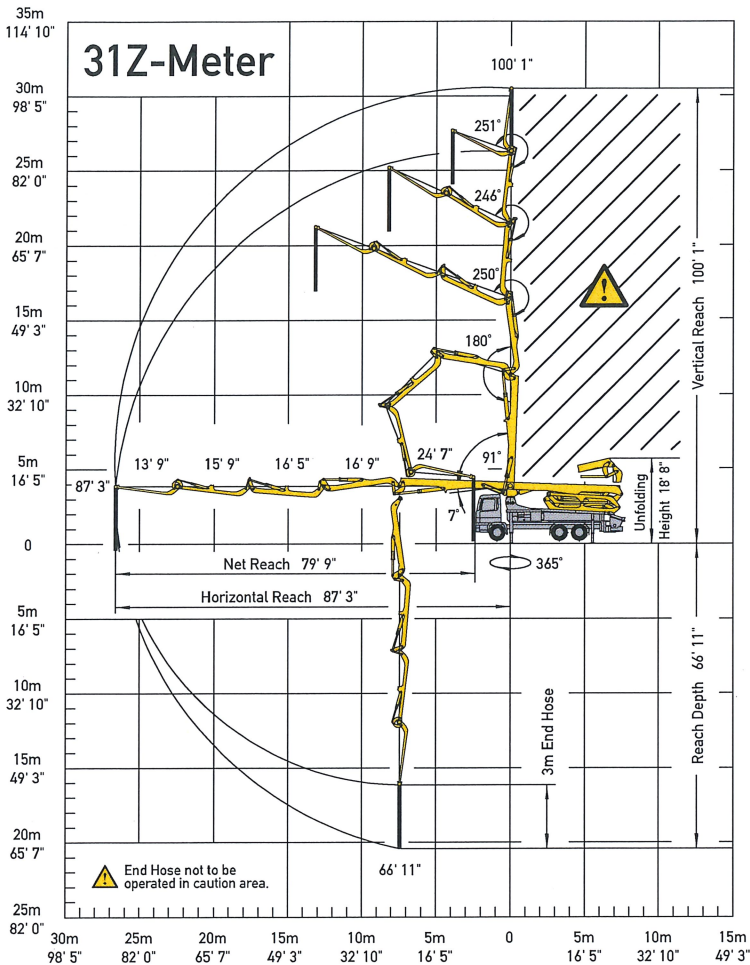
#### PUMP SPECIFICATIONS

|                                       | 31Z.12H   | 31Z.16H   |
|---------------------------------------|---|---|
| Output — rod side                     | 144 yd <sup>3</sup> /hr (110m <sup>3</sup> /hr) | 210 yd <sup>3</sup> /hr (160m <sup>3</sup> /hr) |
| — piston side                         | 97 yd <sup>3</sup> /hr (74m <sup>3</sup> /hr)   | 146 yd <sup>3</sup> /hr (112m <sup>3</sup> /hr) |
| Pressure — rod side                   | 1,189 psi (82 bar)                              | 1,233 psi (85 bar)                              |
| — piston side                         | 1,624 psi (122 bar)*                            | 1,885 psi (130 bar)*                            |
| Material cylinder diameter            | 9" (230mm)                                      | 9" (230mm)                                      |
| Stroke length                         | 83" (2,100mm)                                   | 83" (2,100mm)                                   |
| Maximum strokes per minute — rod side | 21  | 31  |
| — piston side                         | 14  | 21  |
| Volume control                        | 0-Full  | 0-Full  |
| Vibrator                              | Standard  | Standard  |
| Hard-chromed material cylinders       | Standard  | Standard  |
| Hydraulic system                      | Free Flow                                       | Free Flow                                       |
| Hydraulic system pressure             | 5,075 psi (350 bar)                             | 5,075 psi (350 bar)                             |
| Differential cylinder diameter        | 5.1" (130mm)                                    | 5.5" (140mm)                                    |
| Rod diameter                          | 3.1" (80mm)                                     | 3.1" (80mm)                                     |
| Maximum size aggregate                | 2.5" (63mm)                                     | 2.5" (63mm)                                     |
| Water tank — pedestal                 | 185 gal (700L)                                  | 185 gal (700L)                                  |

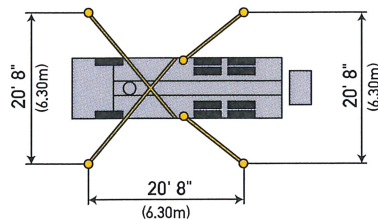
Maximum theoretical values listed.

\* Applies to units mounted on PMA stock truck — MACK MRU 613

• Standard delivery line system rated at maximum line pressure of 1,233 psi (85 bar)

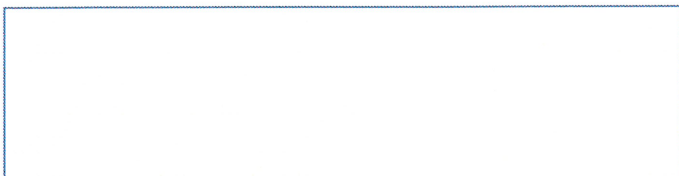


Optional one-sided support (OSS) 120°



Photos and drawings are for illustrative purposes only.

Authorized Distributor



# Putzmeister

Putzmeister America, Inc. Phone (262) 886-3200  
 1733 90th Street Toll-free (800) 884-7210  
 Sturtevant, WI 53177 USA Fax (262) 884-6338

PutzmeisterAmerica.com

pmr@putzam.com

