



**EQUIPMENT GUIDE**  
PLACERS & CUSTOM EQUIPMENT

LEADING THE WAY IN CONCRETE PUMPING SYSTEMS



EQUIPMENT GUIDE



# AN INDUSTRY LEADER FOR OVER 50 YEARS



## ***Delivering Performance, Profitability and Safety***

Con Forms, the only manufacturer of concrete placing systems in the United States, is located in the heartland of America and employs over 200 people in the USA, the United Kingdom, Asia and Europe to reinforce global service offerings and support projects both domestically and internationally. We provide state-of-the-art automated manufacturing processes, heat-treating and testing facilities, a full metallurgy lab, and in-house engineering staff to ensure every customer understands their options and ideal solutions as well as receive products of the highest quality and lowest total cost of ownership (TCO).

## ***Unrivaled Product Quality, Selection and Service***

Con Forms offers a vast product line that covers everything from the pump to the point of placement on a concrete pour – including backend kits for all pump manufacturers, boom kits, laydown lines, couplings, hose and accessories. The full line of placing equipment includes tunnel placers, deck placers, bridge deck spreaders and self-propelled Spider Placer units, which can be engineered to fit any application requirements.

The company's expert technical sales and in-house engineering staff has decades of hands-on experience solving almost every conceivable global high-rise pumping application. They understand the risks, costs, and performance demands bringing exceptional solutions to high-rise jobsites. Through this process, the company delivers the industry's leading abrasion resistant pipe, unique bends, custom valves, placing equipment and laydown systems that are tailored to the requirements of each individual project.

## ***Much more than a Vendor***

Con Forms is a true value creating partner to its customers and the industry – a manufacturer that listens to customers and works with the industry to develop world-class products specific to their needs. Con Forms' sales engineers have seen thousands of projects from the planning phase through to completion. The company's design and manufacturing capabilities, technology, safety standards, and service have consistently provided quality products and added value unrivaled in the industry.

The Con Forms' dedication to excellence grows with every year of business and with customers served. Don't trust the safety of your employees and success of your business with unproven, unsupported and unreliable products.

Put your trust with a guaranteed solutions provider that backs their product and supports customer efforts every step of the way. Trust Con Forms.



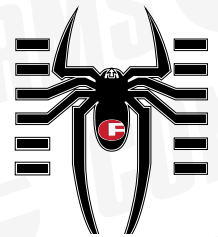


## **16Z SPIDER PLACER**

The 16Z is a cost-effective solution for all low-ceiling indoor concrete placements. The low 13' 1" opening height allows for operations in most commercial, warehouse, and tunnel pours. The maneuverability of the track unit combined with the small outrigger profile allows for custom machine setups to match the jobsite dimensions, resulting in the maximum coverage possible. The 74 HP, tier 4 Perkins diesel engine with flow-through DPF allows this tracked unit to work indoors and in tunnels without inconvenient emissions service intervals. For non-flat applications, the Perkins can power the unit up to 46% grade (25°) terrains and adjust for unlevel conditions up to 20°. This tracked unit is also great for mobility on outdoor mat pours where a crane is not always available or cost prohibitive.



The 16Z has the flexibility to quickly transform into a stand-alone placing unit that is lifted into place and operates on non-tracked applications like high-rise pours. In this application, operations are powered by either an on-board engine (Honda gas or Perkins diesel) or off of a 480V 60Hz electrical supply. The 4-arm Z-fold articulation pattern supplies great placement versatility in a compact and lightweight package.



Hitch your favorite trailer pump to the 16Z and create a cost-effective pump & placement system that's ideal for linear applications like continuous walls and underground tunnels. Or use its mobility to cover all of your pre-cast facility pours.



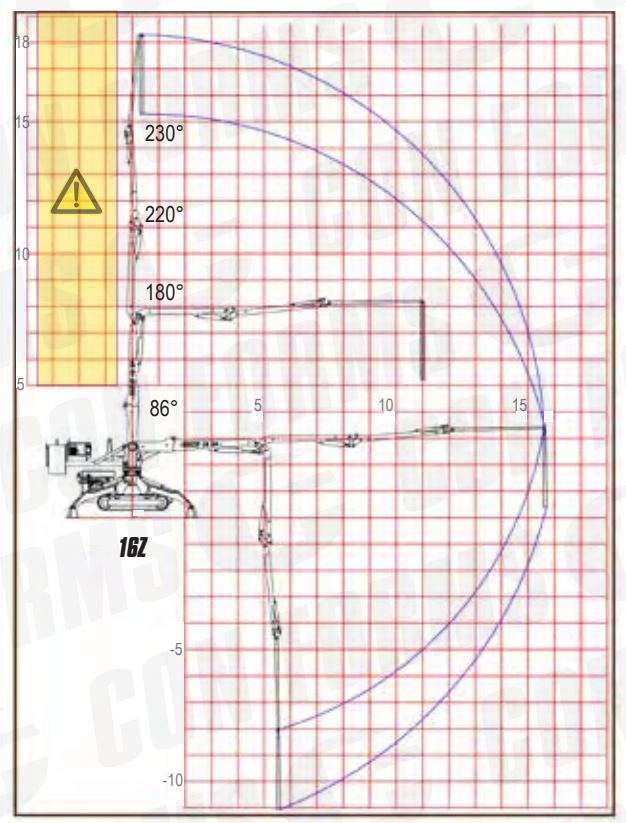


## TECHNICAL SPECIFICATIONS

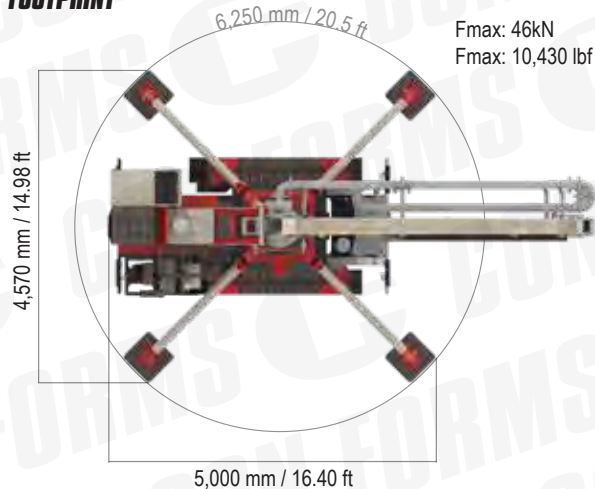
**SPH16-4-TDG:** Tracked Crawler - Gas Engine Driven Boom

**SPH16-4-TDD:** Tracked Crawler - Diesel Engine Driven Boom

Dimension	Metric	Imperial
Vertical Reach from Ground	18.5 m	61 ft
Horizontal Reach	16 m	52.5 ft
Depth of Reach	11 m	36 ft
Minimum Unfolding Height	4 m	13 ft
Number of Boom Sections	4	
Folding System	Z-Fold	
Rotation Range	370°	
Pipeline Diameter	125 mm	5 in
End Hose Length	3 m	10 ft
Control Mode	Remote or Manual	
Maximum Grade	46% Grade, 25°	
Engine	Tier 4 with DPF	
Total Weight	11,200 kg	24,640 lb



### FOOTPRINT



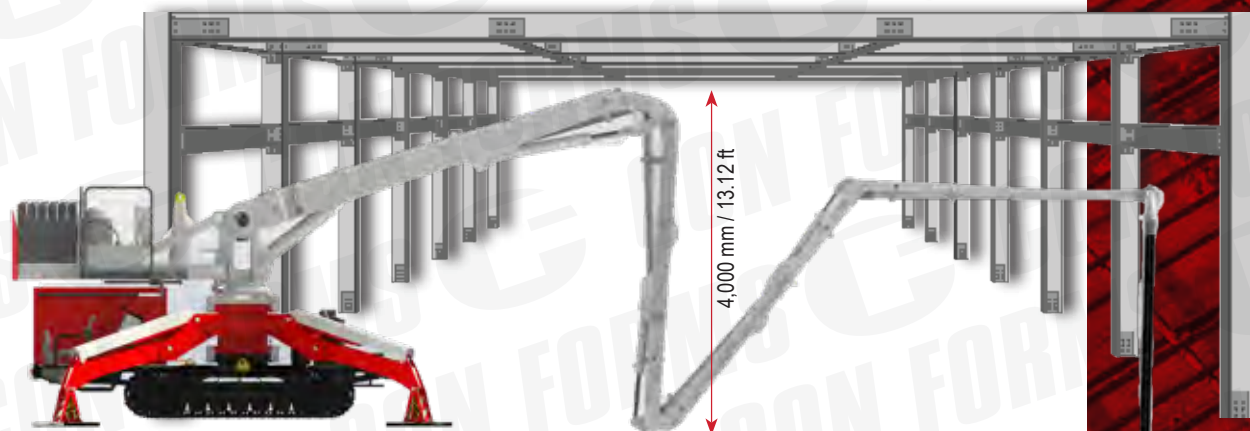
Fmax: 46kN  
Fmax: 10,430 lbf

### FLEXIBILITY

Operates without tracks. Boom option of gas or diesel



### IDEAL FOR LOW CLEARANCE APPLICATIONS





## **18-3 SPIDER PLACER**

The 18-3 is a cost-effective and low-impact alternative to tower-mounted placing booms. Unlike its large-scale cousins, the compact 18-3 spider offers versatility and low jobsite impact with the same productivity.

### ***Low Jobsite Impact***

Using the 18-3 does not require holes in multiple floors to be designed, built, and filled in to make room for the tower boom. The Spider's minimized weight and loading allow for minimal shoring from underneath, and the more compact unit presents minimal risk to the tower cranes above.

### ***Low Overall Weight***

The crane capacity and shoring requirements are drastically decreased due to the low overall unit weight.

### ***Fast Installation***

The Spider unit requires minimal site preparation prior to placement and can be relocated easily by fly-complete crane placement.

### ***Low Budget Impact***

Same boom design concepts performing the same functions for a fraction of the capital outlay and costs associated with set-up, operations and maintenance.





## TECHNICAL SPECIFICATIONS

**SPH18-3-NTG:** Gas Engine Driven Boom

**SPH18-3-NTD:** Diesel Engine Driven Boom

Dimension	Metric	Imperial
Vertical Reach from Ground	20.5 m	67 ft
Horizontal Reach	18 m	59 ft
Depth of Reach	11.5 m	38 ft
Minimum Unfolding Height	5.65 m	18.5 ft
Number of Boom Sections	3	
Folding System	Roll and Fold	
Rotation Range	370°	
Pipeline Diameter	125 mm	5 in
End Hose Length	3 m	10 ft
Control Mode	Remote or Manual	
Counterweight	2,700 kg	5,950 lbs
Total Weight	7,150 kg	15,730 lbs
Power Sources	480V	60 Hz
	Gas or Deisel Option	

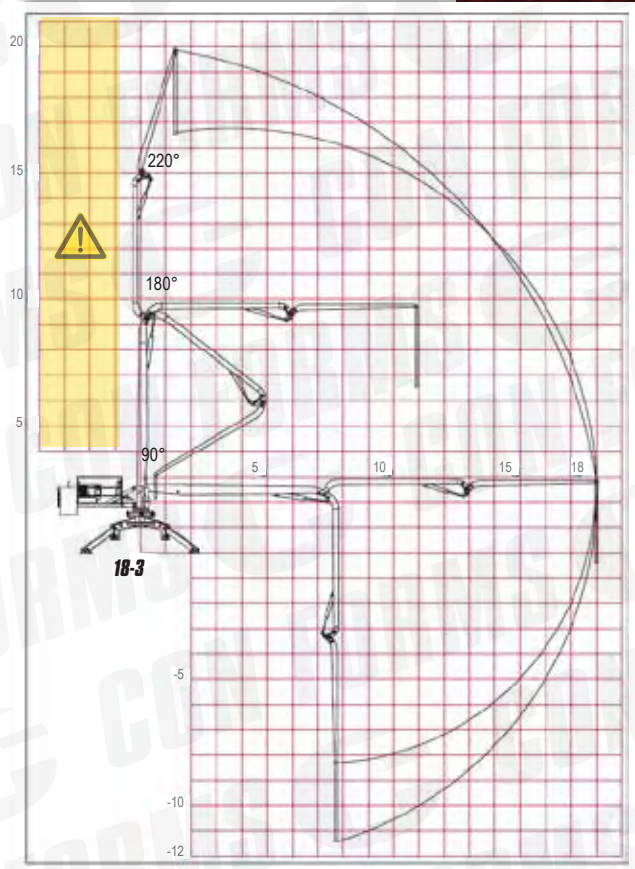
### FOOTPRINT

5,030 mm / 16.50 ft

Fmax: 87kN  
Fmax: 19,400 lbf



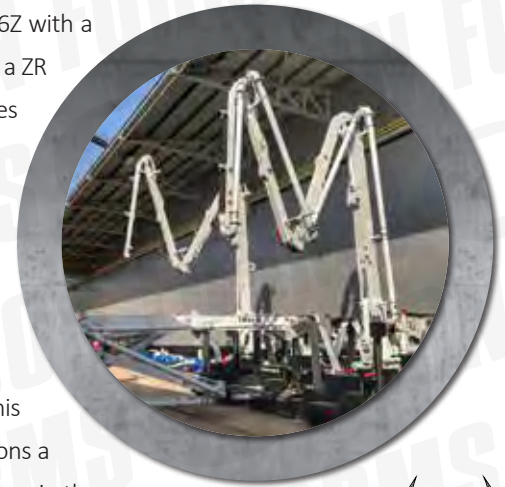
Available on tracks



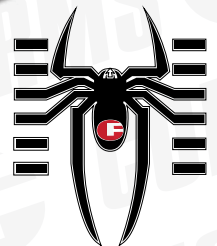


## **18RZ4 SPIDER PLACER**

The 18RZ4 is our newest and most advanced mobile equipment solution. It combines all of the industry-leading features of the 16Z with a longer and more versatile boom configuration. By using a ZR boom-articulation style and extending the angular ranges of motion, the end hose can be located adjacent to the machine while maintaining its minimum-ceiling height requirement. Placement dead zones are eliminated, allowing for the maximum placement footprint possible for every setup location.



With the unmatched mobility of the crawler tracks, this spider can routinely get into jobsite locations and positions a 20-meter class boom truck can only dream of. Once set up in the optimal spot, the 18RZ4 also covers the greatest pour area of any low ceiling placement machine due to its longer reach, versatile boom, and compact footprint.



The low price tag, low maintenance costs, and versatility make the 18RZ4 a cost-efficient option for many applications.

Hitch your favorite trailer pump to the 18RZ4 and create a cost-effective pump & placement system that's ideal for linear applications like continuous walls and underground tunnels. Or use its mobility to cover all of your pre-cast facility pours.





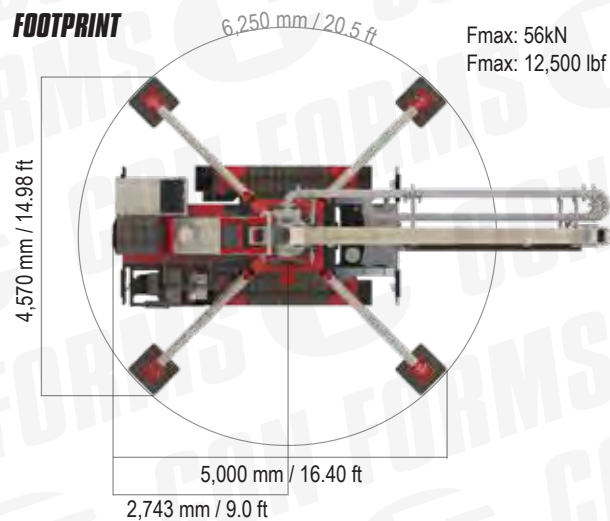
## TECHNICAL SPECIFICATIONS

**SPH18-4-TDG:** Tracked Crawler - Gas Engine Driven Boom

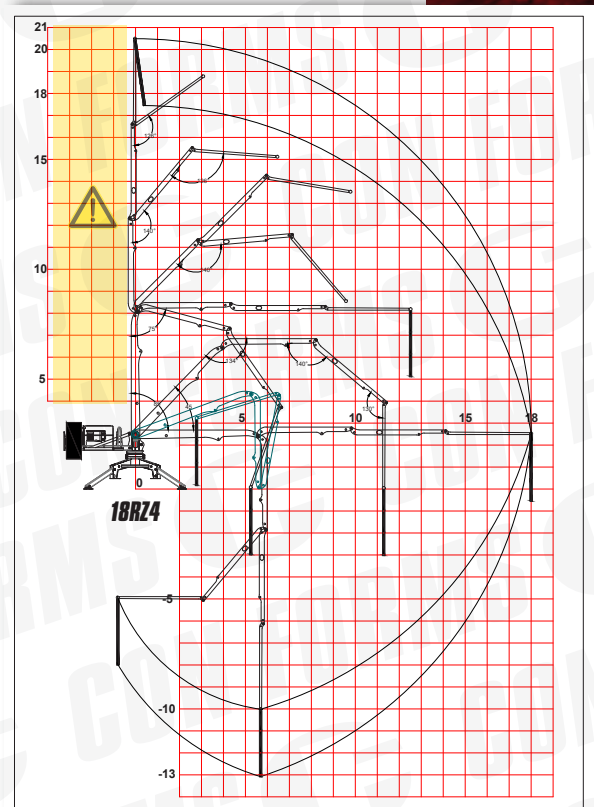
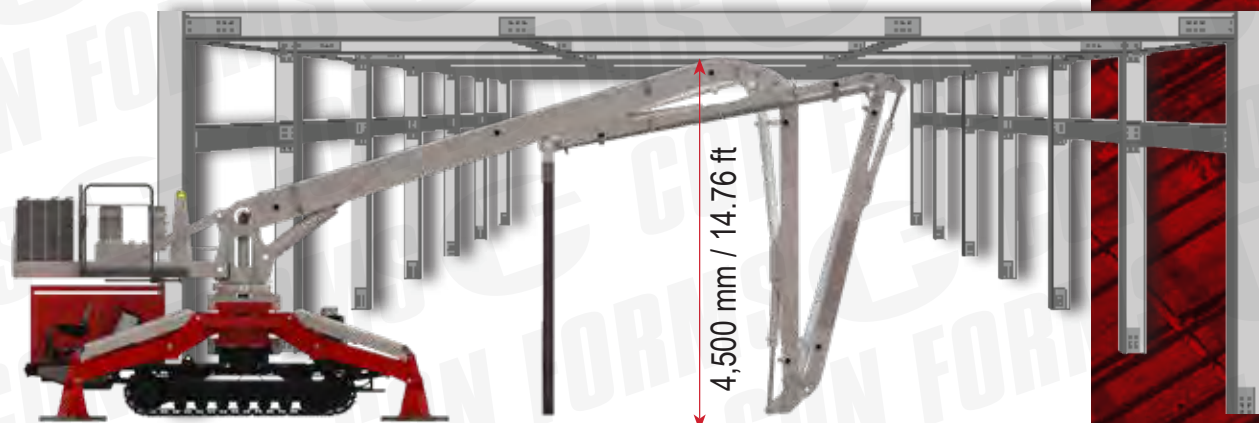
**SPH18-4-TDD:** Tracked Crawler - Diesel Engine Driven Boom

Dimension	Metric	Imperial
Vertical Reach from Ground	20.5 m	67.3 ft
Horizontal Reach	18 m	59 ft
Depth of Reach	13 m	42.7 ft
Minimum Unfolding Height	4.5 m	14.75 ft
Length from Center Rotation to Rear End of Boom	2.7 m	9.0 ft.
Number of Boom Sections	4	
Folding System	RZ-Fold	
Rotation Range	400°	
Pipeline Diameter	DN125	4.8 in
End Hose Length	3 m	10 ft
Control Mode	Remote or Manual	
Maximum Grade	46% Grade, 25°	
Engine	Tier 4 with DPF	
Total Weight	11,150 kg	24,580 lb

### FOOTPRINT



### IDEAL FOR LOW CLEARANCE APPLICATIONS



### FLEXIBILITY

Operates without tracks. Boom option of gas or diesel





# SAFETY AS A STANDARD

Concrete pumping comes with a wide variety of risk factors, and in such a niche industry, there are very few experts. Safety is of the utmost importance and a cornerstone at Con Forms and comes as a standard with the entire Con Forms product line. All Con Forms' products are CPMA certified, meaning they meet the high safety standards set by the Concrete Pump Manufacturers Association. Con Forms is also a proud founding member of the American Concrete Pumping Association.

Due to the company's expertise in concrete delivery systems, customers continue to request safety training tailored to their projects. Representatives from Con Forms have traveled the globe to educate professionals on best safety practices to keep their workers safe on jobsites, with an emphasis on jobs that require high-pressure concrete pumping lines.

Con Forms safety training has proven beneficial to a broad industry audience including equipment operators, equipment managers, company owners, project managers, safety managers and construction superintendents. These safety presentations help to improve worksite safety conditions by pointing out potential problem spots, and areas to inspect and observe to help avoid safety issues before they occur.



## THE CONSTRUCTION FORMS, INC. FAMILY OF BRANDS





North America



Europe

Major global markets served

800-223-3676

777 MARITIME DR  
PORT WASHINGTON, WI 53074

CF-SALES@CONFORMS.COM

WWW.CONFORMS.COM

**CON FORMS** 